

V2



## LPG FLEXIBLE HOSE AND FITTINGS

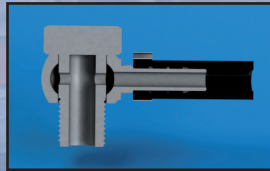
- HOSES** : Thermoplastic Hose Range according ECE R067.01 Class 1.
- HIGH FLOW** : After installation till 30% more flow compared to copper tube.
- FAST** : Assembly time reduction till 60% compared to copper tube.
- RELIABLE** : Over 15 years in use for fluid LPG injection systems.
- MEET NORM** : ECE R067.01 defines crimped fittings.
- CRIMPED** : Oetiker Clamb or LPG-FIT Shell are ECE R067.01 approved.

### FLEXIBLE HOSE RANGE

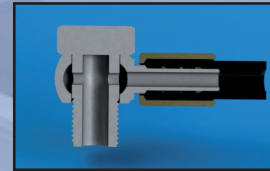
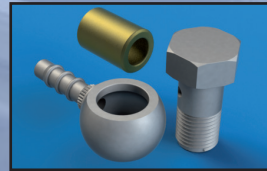
Partnr.	Inside diameter (mm)	Order (m)	Price Euro /m
H03	5	2000	1.60
H04	6.5	2000	1.90
H05	8	1000	2.10
H06	10	1000	2.75

### FITTING SETS

#### FBB FITTING WITH CLAMB

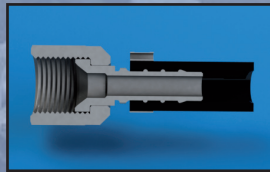
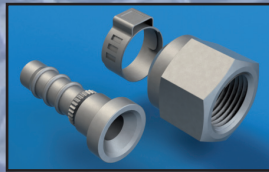


#### FBB FITTING WITH SHELL

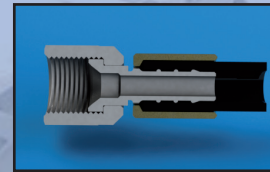
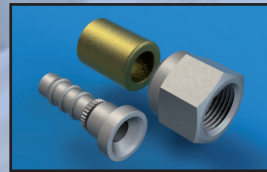


Partnr.	Hose	Bolt	Clamb	Shell	Remark	Euro/ St.
FBB-A	H03	M10	X			2.25
FBB-B	H03	M10		X		2.35

#### FNF FITTING WITH CLAMB

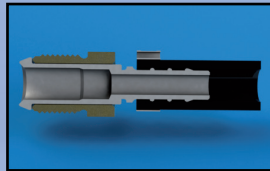
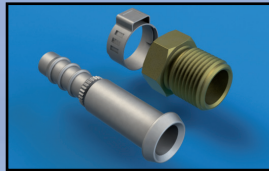


#### FNF FITTING WITH SHELL

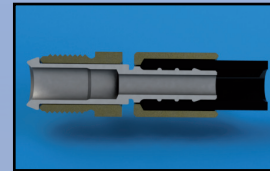
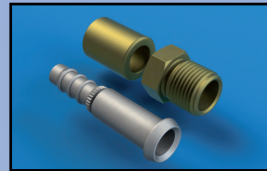


Partnr.	Hose	Nut	Clamb	Shell	Remark	Euro/ St.
FNF-A	H03	G ¼	X			2.25
FNF-B	H03	G ¼		X		2.35
FNF-C	H04	G ¼	X			2.40
FNF-D	H04	G ¼		X		2.50
FNF-E	H05	¾ UNF	X			2.55
FNF-F	H05	¾ UNF		X		2.65
FNF-G	H06	¾ UNF	X			2.65
FNF-H	H06	¾ UNF		X		2.70
FNF-I	H06	¾ UNF	X		90" BENDED	2.80
FNF-J	H06	¾ UNF		X	90" BENDED	2.90

## FSF FITTING WITH CLAMB

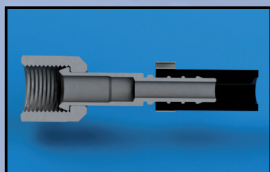
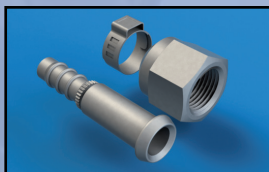


## FSF FITTING WITH SHELL

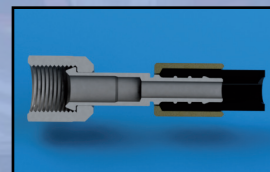
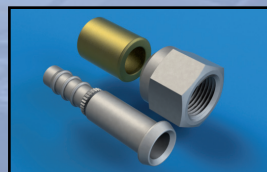


Partnr.	Hose	Screw	Clamb	Shell	Remark	Euro/ St.
FSF-A	H03	M10	X			2.15
FSF-B	H03	M10		X		2.25
FSF-C	H03	M12	X			2.25
FSF-D	H03	M12		X		2.30
FSF-E	H04	M12	X			2.40
FSF-F	H04	M12		X		2.50

## FNS FITTING WITH CLAMB

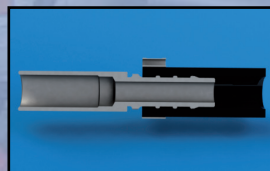
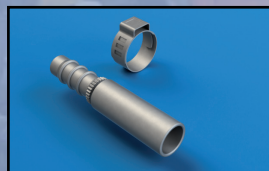


## FNS FITTING WITH SHELL

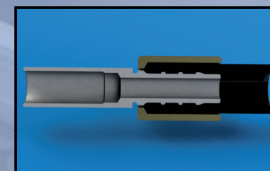
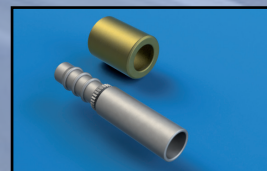


Partnr.	Hose	Nut	Clamb	Shell	Remark	Euro/ St.
FNS-A	H03	G ¼	X			2.25
FNS-B	H03	G ¼		X		2.35
FNS-C	H04	G ¼	X			2.40
FNS-D	H04	G ¼		X		2.50

## FSR FITTING WITH CLAMB



## FSR FITTING WITH SHELL



Partnr.	Hose	Pipe ø.	Clamb	Shell	Remark	Euro/ St.
FSR-A	H03	6	X			2.00
FSR-B	H03	6		X		2.10
FSR-C	H04	8	X			2.10
FSR-D	H04	8		X		2.15
FSR-E	H05	8	X			2.15
FSR-F	H05	8		X		2.25
FSR-G	H05	8	X		60 BENDED	2.80
FSR-H	H05	8		X	60 BENDED	2.90

## TOOLING

Partnr.		Euro/ St.
T-A	Oetiker clamb fitting tool	20
T-B	LPG-FIT Hydraulic Hand Crimper	420